



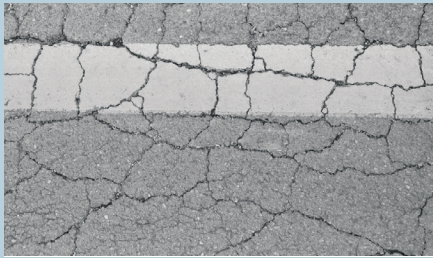
PERFORMANCE  
AND HIGH STRENGTH



## REINFORCEMENT GEOGRIDS

- › INCREASES THE SERVICE LIFE OF ROADS
- › REDUCES MAINTENANCE COSTS
- › FACILITATES IMPLEMENTATION

# TEXGRID® GEOGRIDS



Prevents all types of crack formation (fatigue, thermal, reflective cracking etc.)



Increases the load capacity of the road  
(= 3 to 4 cm of additional asphalt mix)



Gives designers various cost-efficient repair options

## A LONG-TERM SOLUTION

E-CR fibreglass, which is used in the development of Texgrid® products, is six times more resistant to acid corrosion than the fibreglass normally used for this type of product. This property is particularly important because the emulsions used in Europe are the cationic type (pH < 7).

## OFFERS STRONG RESISTANCE

The modulus of elasticity for E-CR fibreglass, which is used in the development of Texgrid® products, is 25% higher than that of E fibreglass, whilst its tensile strength is 20% higher.

## EFFECTIVE AND SIMPLE TO USE

Texgrid® geogrids are designed to be installed in curves, laid without folds and improve mechanical stabilisation between layers.

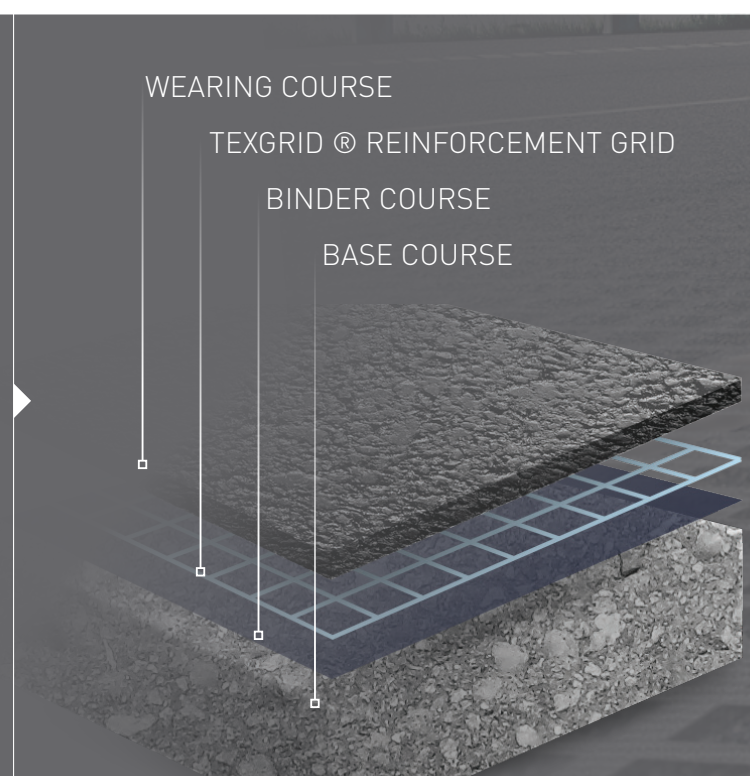
## GREATER PRODUCTIVITY

All the products in the Texgrid® range have been designed and conditioned in such a way that they can be maintained by a single person in compliance with the requirements of SUVA (Swiss Accident Insurance Fund). Not only does the use of products in the Texgrid® range protect the health and safety of workers, the installation process also requires one less person.

## INSTALLATION

To ensure that the reinforcement system is as effective as possible, it is absolutely essential that geogrids are installed with all due care and attention. Texum's experienced engineers and technicians are available to provide you with on-site training and advice during the installation of Texgrid® geogrids.

Texum has joined forces with companies that specialise in laying reinforcement geogrids and is thus able to offer you an efficient installation service. All the partners are specially trained in the use of Texgrid® products and have purpose-built installation equipment and machinery.



# TECHNICAL PROPERTIES

GEOGRID	GV 120		CV 200		GIRO CV 150	
	UNIT	WARP	WEFT	WARP	WEFT	0° / ± 45° / 90°
Composition		E-CR glass		E-CR glass	Carbon	Carbon
Tensile strength	kN/m	> 120		> 120	> 200	> 150
Elongation at rupture*	%	3.5 - 4.5		3.5 - 4.5	1.6	1.6
Modulus of elasticity*	N/mm <sup>2</sup>	> 80'000		> 80'000	240'000	240'000
Mesh size	mm	18 x 18				25
<b>BONDING FABRIC</b>						
Composition		Polyester				
Areal density	g/m <sup>2</sup>	18				
Melting point	°C	> 250				
<b>CONDITIONING</b>						
Areal density	g/m <sup>2</sup>	256		229		271
Width	m	0.98 or custom-made				1.27
Length	m	50 or custom-made				
Weight	kg	13		11		18
<b>BINDER COURSE</b>						
Type		Bitumen emulsion*			SAM1*	
Dosage		250 à 400 g/m <sup>2</sup> of residual binder			laying technique	
Bond strength		> 12 à 15 kN, depending on type of interface (Leutner method)				

\* Fibre roving

\* Stress Absorbing Membrane Interlayer

## PREPARATION OF THE SURFACE PRIOR TO INSTALLATION

- Road reprofiled with an asphalt mix, if necessary.
- Cracks (> 4mm) filled in with a modified bitumen product (joint filling compound).
- Road surface cleaned with care.

## APPLICATION OF A TACK COAT

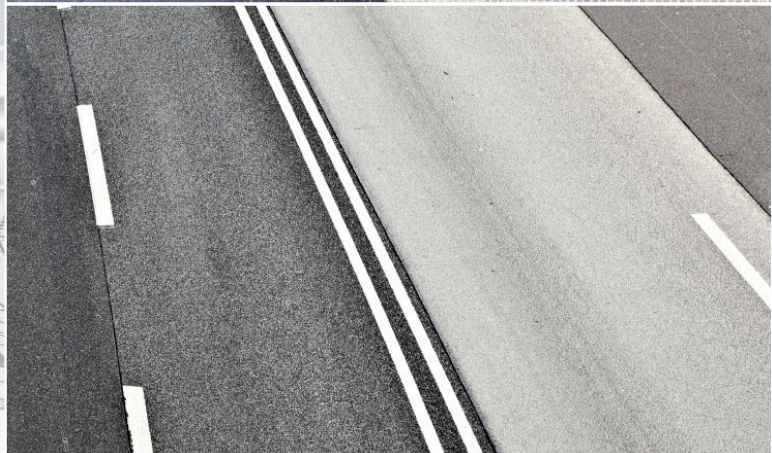
- The choice of type and dosage depends on climatic conditions, the condition of the base and the evenness of the surface.

## INSTALLATION OF THE TEXGRID® GEOGRID

- The tack coat must have ruptured before the Texgrid® geogrid is installed. The installation can be done by mechanical or manual means. There is no need for the Texgrid® to be nailed down. The use of a small steamroller to compress the surface is recommended instead.

## LAYING THE WEARING COURSE

- Spread the layer of asphalt mix.



**Innovation, performance** and **assistance** are at the heart of everything we do. Our strategy consists in liaising with our clients prior to undertaking any work and in using our wide-ranging expertise to consistently offer constructive solutions and full assistance, all the way from product selection to installation systems.

Please feel free to contact us. We will be delighted to offer you advice and point you towards the solution most suited to your project.

**TEXUM SÀRL**

ROUTE DES DAILLETES 21  
CH - 1700 FRIBOURG

P : +41 26 422 24 31  
F : +41 26 422 24 32

OFFICE@TEXUM.CH  
TEXUM.CH